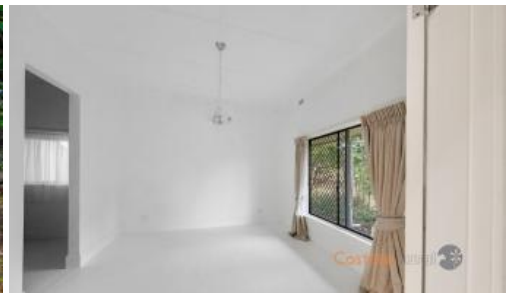




5 Brooke St, Towong



## The Perfect Country Escape

A rare opportunity to hold your very own piece of Snowy River Country. This delightful home is positioned on a spacious, flat block and is only a few short minutes' drives from the center of Corryong township and the Murray River. Backing onto vacant land over 4 acres, this property offers you a country lifestyle, not far from the conveniences that the town has to offer. It is country living and an entertainer's dream. Corryong is situated at the foothills of the Snowy Mountains in the heart of the Upper Murray Region and is within 2 hours of major centers Albury/Wodonga and Wagga Wagga. It is also within a few hour's drive of snowfields, several national parks, and the coast.

Comprising of 3 bedrooms and 1 bathroom, with the master featuring a large walk-in robe. The fully equipped kitchen features an electric in-wall oven and stovetop, there is a spacious meal area with a large living area featuring a wood heater and reverse cycle system plus evaporative cooling for the summer months.

A welcoming and private undercover area has recently been added to the home with plenty of space to add both an outdoor dining and lounge area, the perfect place to entertain your guests all year round. Shedding and vehicle storage will never be an issue with a large lockable garage offering plenty of storage, workshop space, and a large room that could easily be converted into an additional bedroom or guest room.

The home features established gardens including fruit trees and an internal fence offering a secure yard for dogs. There is an abundance of space to add your own unique touch. The sky is your limit with the vacant land

🛏 3 🚿 1 🚗 3 📏 5.40 ac

**Price** SOLD for \$580,000  
**Property Type** Residential  
**Property ID** 672  
**Land Area** 5.40 ac

### Agent Details

Kerry Miller - 0438127557  
Justin Costello - 0419007925

### Office Details

Corryong  
64 Hanson Street Corryong VIC  
3707 Australia  
02 6076 2055

**CostelloRural**  
REAL ESTATE | LIVESTOCK | MERCHANDISE

overlooking the historic Towong Racecourse and featuring a dam. The land is also attached to a building entitlement with the option to subdivide into two allotments. Or use it as a paddock to keep your livestock.

Water is plentiful with a water entitlement to the Murray River and a 20,000L water tank on site. Be sure to get in quickly as a property of this size and price will not last long!

*The above information provided has been furnished to us by the vendor/s. We have not verified whether or not that information is accurate and do not have any belief in one way or the other in its accuracy. We do not accept any responsibility to any person for its accuracy and do no more than pass it on. All interested parties should make and rely upon their own inquiries in order to determine whether or not this information is in fact accurate.*