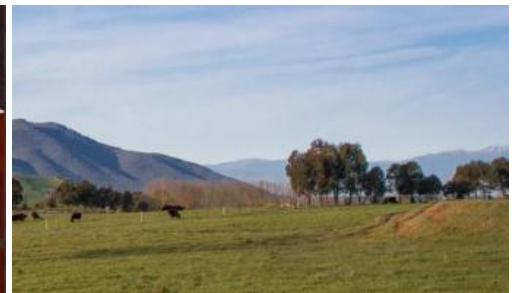


Sold



Lot 1, 2412 Murray Valley Highway, Cudgewa



RED GUM RISE

BUILD YOUR DREAMS

Red Gum Rise is a rural selection of lifestyle properties that will energise your imagination to enable a lifestyle that encapsulates environmental, community and personal living in the North East Victoria. From the selections overlooking the valleys to the Australian Alps, the choice is now in your hands.

Red Gum rise is located in an ideal location with ample north and east facing vistas, from first light in the morning breaking over the alps to the setting sun to your west, Red Gum Rise has the site to offer solar passive living.

The local mountains protect you from harsh winds and the high snow peaks offering alpine like conditions cooling through-out the winter months.

Situated on the Murray Valley Highway, Red Gum Rise is on the edge of the Cudgewa Village, 12 kilometers west of Corryong, 120 Kilometres from Albury/Wodonga and midway between Sydney and Melbourne.

Corryong is close to the Burrowa-Pine Mountain National Park and the massive Alpine National Park.

The above information provided has been furnished to us by the vendor/s. We have not verified whether or not that information is accurate and do not have any belief in one way or the other in its accuracy. We do not accept any responsibility to any person for its accuracy and do no more than pass it on. All interested parties should make and rely upon their own inquiries in order to determine whether or not this information is in fact accurate.

 1  1  1  7.72 ha

Price SOLD for \$205,000

Property Type Residential

Property ID 519

Land Area 7.72 ha

Agent Details

Justin Costello - 0419007925

Office Details

Corryong

64 Hanson Street Corryong VIC

3707 Australia

02 6076 2055

CostelloRural
REAL ESTATE | LIVESTOCK | MERCHANDISE 